

Loo Paper

- Installment 01/25 -
Your Fachschafts-Newsletter

Calendar

- 06.01. End of winter break
- 07.–10.01. Ticket sale math ball
- 08.01. Equality breakfast
- 09.01. Lecture series (Part 1)
- 11.01. Math winter ball
- 14.01. Mental Health Group Talk
- 15.01. Lecture series (Part 2)
- 15.01. Chess tournament
- 17.01. Tea Time With Women In Math
- 22.01. SWaffles

Events

We are happy to welcome you to the start of the new year with an equal opportunities event. This time the stem gender equality workgroups are organizing a free **gender equality breakfast** on Wednesday, 08.01., from 09am–12pm in room 0.016 in the computer science building. There you will find a selection of different breakfast options and hot drinks. We can discuss and network about equality, studying and many other topics. **Everyone** is welcome!

On the 11th the **math winter ball** will take place at the club Rondo, tickets will be sold from 07.–10.01. for 10€ in the office! On the 22nd we will assist you studying with some waffles (**swaffles**) at the office starting at 2pm. On the 17th there will be a **Tea Time with women in Mathematics** in the Hausdorff room from 2:30–5pm, this time with the topic “representation of women in math subfields”. The event will be held in English and is inspired by this paper arxiv.org/abs/1509.07824.

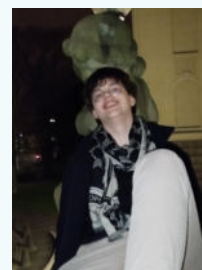
Newcomers

On the 16th of December the Fachschaft got newly constituted. Thanks to all of you who voted! In the following we want to introduce you to the managing people: The Fachschaftsvertretung (FSV) is being lead by Jessica Schega as chairwoman and Ludwig Monnerjahn as her deputy. At the top of the Fachschaftsrat (FSR) is Louis Kurtzke as chairman, Lilian Witters as deputy and Lorenzo Nastase as treasurer. We wish everyone a great term!

Presidency of the FSV



Jessica Schega

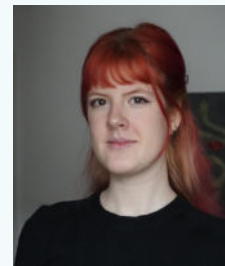


Ludwig Monnerjahn

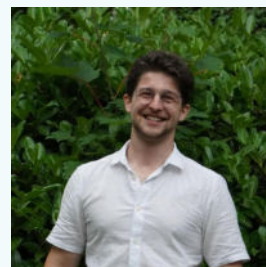
Board of the FSR



Louis Kurtzke



Lilian Witters



Lorenzo Nastase

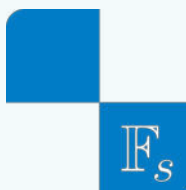
♥ Happy New Year 2025! ♥

Riddle of the month

Jasmine and rose creepers are two creepers (climbing plants) that are both climbing up and around a cylindrical tree trunk. Both jasmine and rose begin at the same spot on the ground and twist both clockwise and counterclockwise. The rose had done three complete twists and the jasmine had made five before they reached the tree's first branch. How many times do they cross, excluding the bottom and top? The solution will be on the next Loo Paper.

Solution to the last riddle:

If I were to ask the other gatekeeper which gate leads to heaven, what would they say?



For feedback or Q&A
send a mail to klopapier@fsmath.uni-bonn.de.